

NOTES

1. Bearings shown are based on magnetic north.
  2. The precision of this survey is  $1/6,345$ .
- FINAL SURVEY

To All Parties Interested in Title to Premises Surveyed:  
This is to certify that the survey was actually made on the ground as per record description and is correct; that the project is installed and erected entirely on the land covered by the insured mortgage and within the building restriction lines, if any, on said land; that the project does not overhang or encroach upon any easement or right-of-way of others, and that there are no encroachments either way across property lines (except as shown).

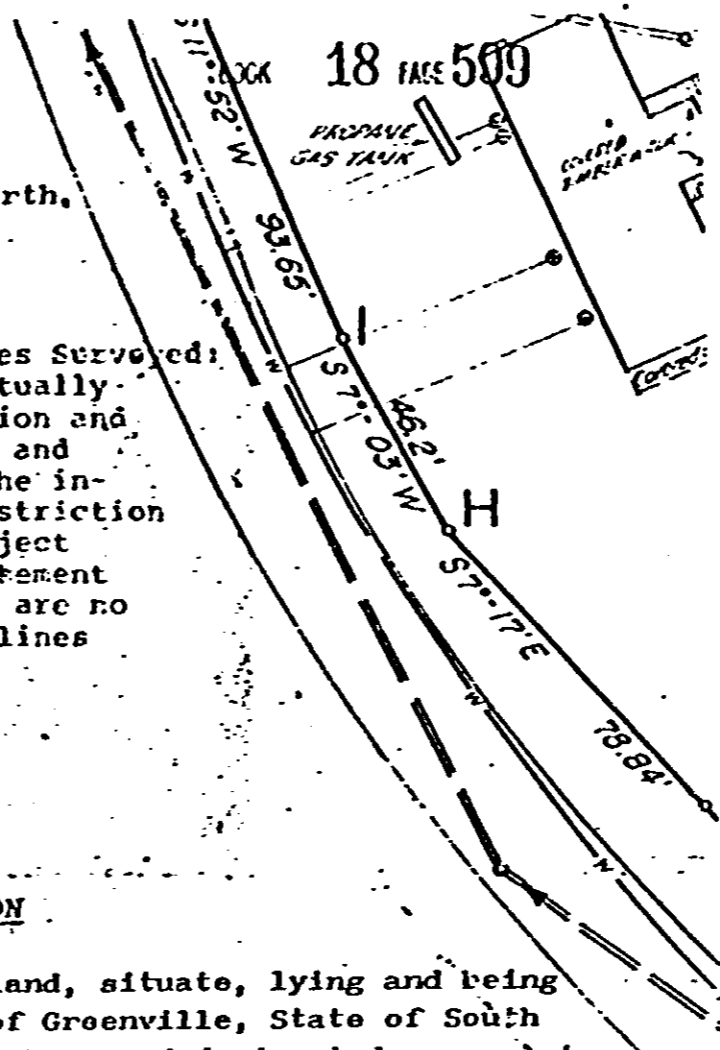
DATE: 8-8-80

BY: David N. Simpson  
David N. Simpson  
Civil Engineer and Land Surveyor  
S. C. Registration No. 1664

LEGAL DESCRIPTION

All that certain tract, piece or parcel of land, situate, lying and being in the County of Greenville, near the City of Greenville, State of South Carolina, containing 11.95 Acres of land as shown and designated on a plat entitled "Plat of a Perimeter Survey for Quincy Square, FHA Project No. 054-35364 PM, Section 221-D4", which said plat was made by Freeland and Associates, and is dated \_\_\_\_\_, and is duly recorded in the Clerk of Court's Office for Greenville County in Plat Book \_\_\_\_\_, at Page \_\_\_\_\_. The said property is more fully described as follows:  
COMMENCING at an iron pin corner, which corner is located on a line bearing approximately S20°-30'E for an approximate distance of 57' from the center-line intersection of Old Spartanburg Rd. (S.C. Rd. S-94) and the center-line of Gaithburg Square; said iron pin corner being the point of beginning, being designated on the aforesaid plat by the Letters "A" and "P.O.B."; thence on a line bearing S45°-58'E for a distance of 163.45' to a point; thence on a line bearing S47°-01'E for a distance of 234.84' to a point; thence on a line bearing S53°-32'E for a distance of 110.69' to a point; thence on a line bearing S44°-21'E for a distance of 122.57' to a point; thence on a line bearing S31°-49'E for a distance of 87.00' to a point; thence on a line bearing S10°-46'E for a distance of 125.06' to a point; thence on a line bearing S7°-17'E for a distance of 78.84' to a point; thence on a line bearing S7°-03'W for a distance of 46.2' to a point; thence on a line bearing S11°-52'W for a distance of 93.65' to a point; thence on a line bearing S20°-00'W for a distance of 59.73' to a point; thence on a line bearing S22°-01'W for a distance of 85.63' to a point; thence on a line bearing S23°-38'W for a distance of 67.74' to a point; thence on a line bearing S29°-51'W for a distance of 32.15' to a point; thence on a line bearing N69°-04'W for a distance of 100.28' to a point; thence on a line bearing N70°-23'W for a distance of 244.96' to a point; thence on a line bearing N2°-23'E for a distance of 64.53' to a point; thence on a line bearing N25°-52'E for a distance of 59.79' to a point; thence on a line bearing N59°-44'W for a distance of 237.55' to a point; thence on a line bearing N63°-29'W for a distance of 353.29' to a point; thence on a line bearing N34°-32'E for a distance of 327.81' to a point; thence on a line bearing N39°-07'E for a distance of 150.00' to a point; thence on a line bearing N34°-32'E for a distance of 200.00' to a point; being the point of beginning. The above property is bounded on the North and East by Gaithburg Square, on the South by Eastgate Village, and on the West by Old Spartanburg Rd. (S.C. Rd. S-94).

The property herein being described is contained within the Letters "A-B-C-D-E-F-G-H-I-J-K-L-M-N-O-P-Q-R-S-T-U-V and A," all as shown in the aforesaid plat.



4328 IV-2

4328 IV-2